

# A new Health and Wellbeing Centre for Shipston and the surrounding areas



As part of the development of the Ellen Badger Hospital site, a new Health and Wellbeing Centre is being created to complement the new Hospital and Medical Centre in Phase 1.

It will be a flexible space that is community led and delivers conventional healthcare alongside activities to address social factors.

The development of the Health and Wellbeing Centre is being informed by a Health Impact Assessment, which is being developed with input from partners. It will align to the four areas within the nationally recognised population health model, shown in the diagram below.

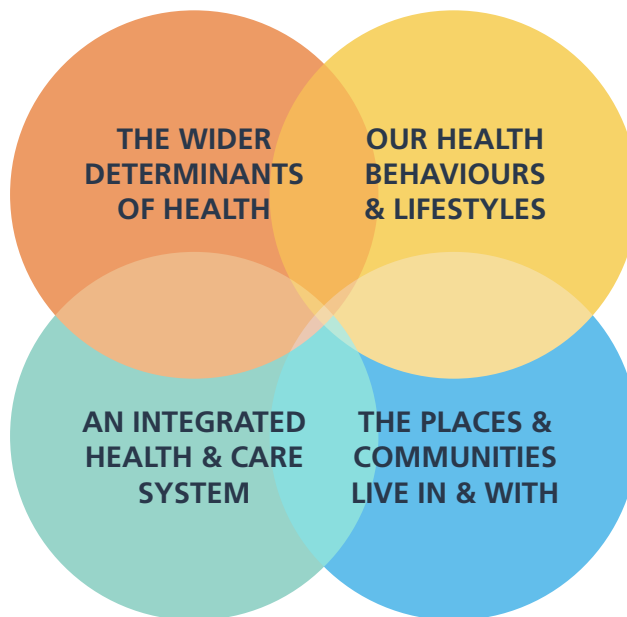
Within the diagram below you can see initial considerations for what the Health and Wellbeing Centre could offer to improve the health and care for local people. We will seek to raise external funding to make the centre the best it can be.

If you would like to get involved with the Health and Wellbeing Centre please contact: [EBHdevelopment@swft.nhs.uk](mailto:EBHdevelopment@swft.nhs.uk)

## OUR FUTURE VISION FOR THE HEALTH AND WELLBEING CENTRE

- Provide facilities such as water point provision and WIFI access
- Design the centre to be Dementia friendly
- Promote active travel
- Work with Shipston Medical Centre to support people with health risks
- Provide access for community groups
- Support carers visiting the site

- Identify opportunities for apprenticeships and work experience placements
- Increase awareness of health initiatives
- Promote current support available, such as local active communities manager, social prescribers and health champions\*
- Work with Health Visitors to ensure the centre supports families



- Encourage physical activity
- Promote local volunteering opportunities
- Publicise training available
- Investigate how the café space can be used to promote healthy eating
- Provide opportunities for local groups to use community space

- Work with Shipston Health and Wellbeing Partnership to identify local priorities
- Promote wildlife and biodiversity within the grounds
- Work with young people to understand how they would use the centre
- Increase opportunities for social interaction for people with a Dementia or sensory disabilities
- Retain heritage of the Ellen Badger Hospital

\* For more information on becoming a Health Champion please visit: [www.volunteermatters.org.uk/project/health-champions-warwickshire](http://www.volunteermatters.org.uk/project/health-champions-warwickshire)